

Human Recombinant CD40 Stable Cell Line
Cat. No. M00606

Version 04282015

I. INTRODUCTION

Catalog Number: M00606

Cell Line Name: GS-H2/CD40

Gene Synonyms: Bp50, CDW40, TNFRSF5, p50

Expressed Gene: Codon Optimized from NM_001250.4; no expressed tags

Host Cell: GS-H2

Quantity: Two vials of frozen cells (1×10^6 per vial)

Stability: 20 passages

Application: *in vitro* functional assay

Freeze Medium: 95% complete growth medium, 5% DMSO

Complete Growth Medium: MEM, 10% FBS

Culture Medium: MEM, 10% FBS, 2 $\mu\text{g/ml}$ Puromycin, 200 $\mu\text{g/ml}$ Hygromycin B

Mycoplasma160: Negative

Functional Performance: For CD40L protein, Signal / Background (S/B) > 3

Storage: Liquid nitrogen immediately upon receipt

II. BACKGROUND

Cluster of differentiation 40, CD40 is a costimulatory protein found on antigen presenting cells and is required for their activation. The binding of CD154 (CD40L) on TH cells to CD40 activates antigen presenting cells and induces a variety of downstream effects.

REPRESENTATIVE DATA

- Protein Expression Validation

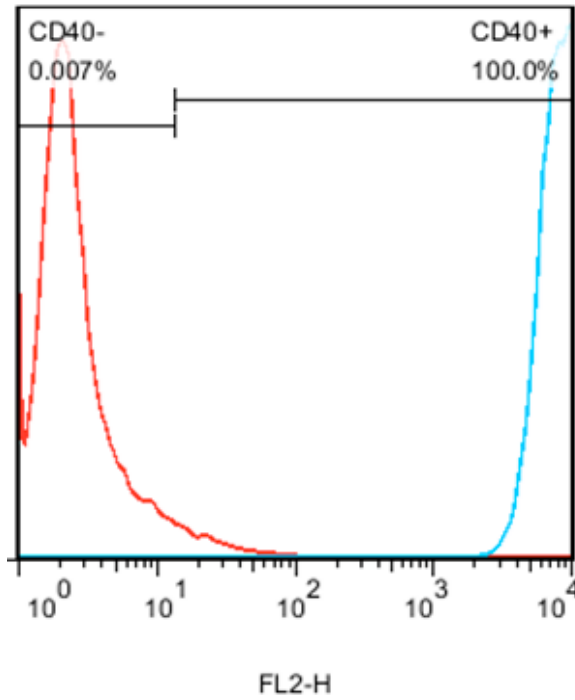


Figure 1. Flow cytometry analysis of CD40 expression in GS-H2/CD40 cells. Red: GS-H2, Blue: GS-H2/CD40.

- Validation by *in vitro* Functional Assay

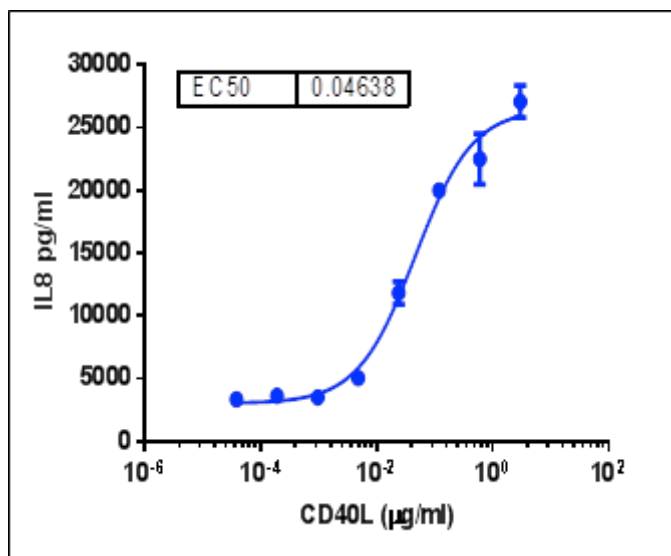


Figure 2. Functional analysis of CD40L protein on GS-H2/CD40 cells

III. THAWING AND SUBCULTURING

Thawing Protocol

1. Remove the vial from liquid nitrogen tank and thaw cells quickly in a 37°C water-bath.
2. Just before the cells are completely thawed, decontaminate the outside of the vial with 70% ethanol and transfer the cells to a 15 ml centrifuge tube containing 9 ml of complete growth medium.
3. Pellet cells by centrifugation at 200 x g for 5 min, and remove the medium.
4. Resuspend the cells in complete growth medium.
5. Transfer the cell suspension to a 10 cm dish with 10 ml of complete growth medium.
6. Grow the cells in incubator with 37°C, 5 % CO₂.
7. Add antibiotic in the following day.

Sub-culturing Protocol

1. Centrifuge the cells at 200 x g for 5min, and remove the medium.
2. Resuspend the cells in culture medium and add the cells suspension to new culture dish.
3. Grow the cells in incubator with 37°C, 5 % CO₂.

Subcultivation Ratio: A subcultivation ratio of 1:4 to 1:8 is recommended

Medium Renewal: Every 2 to 3 days

IV. REFERENCES

1. Chatzigeorgiou A, Lyberi M, Chatzilymperis G, Nezos A, Kamper E. CD40/CD40L signaling and its implication in health and disease. *BioFactors* (Oxford, England). 2009, 35(6): 474–83.
2. Raul Elgueta, Micah J. Benson, Victor C. de Vries, Anna Wasiuk, Yanxia Guo, and Randolph J. Noelle. Molecular mechanism and function of CD40/CD40L engagement in the immune system. *Immunol Rev.* 2009 May: 229(1).

GenScript USA Inc,

860 Centennial Ave.

Piscataway, NJ 08854

Toll-Free: 1-877-436-7274

Tel: 1-732-885-9188, Fax: 1-732-210-0262

Email: product@genscript.com

Web: <http://www.genscript.com>

For Research Use Only.

860 Centennial Ave., Piscataway, NJ 08854, USA

Toll-Free: 1-877-436-7274 Tel: 1-732-885-9188 Fax: 1-732-210-0262 Email: product@genscript.com Web: www.genscript.com

Limited Use License Agreement

This is a legal agreement between you (Licensee) and GenScript USA Inc. governing use of GenScript's stable cell line products and protocols provided to licensee. By purchasing and using the stable cell line, the buyer agrees to comply with the following terms and conditions of this label license and recognizes and agrees to such restrictions:

- 1) The products are not transferable and will be used at the site where they were purchased. Transfer to another site owned by buyer will be permitted only upon written request by buyer followed by subsequent written approval by GenScript.
- 2) The purchaser cannot sell or otherwise transfer (a) this product (b) its components or (c) materials made using this product or its components to a third party.
- 3) The products sold by GenScript are for laboratory and animal research purposes only. The products are not to be used on humans, for consumption, or for any unlawful uses.

GenScript USA Inc. will not assert against the buyer a claim of infringement of patents owned or controlled by GenScript USA Inc. and claiming this product based upon the manufacture, use or sale of a clinical diagnostic, therapeutic and vaccine, or prophylactic product developed in research by the buyer in which this product or its components has been employed, provided that neither this product nor any of its components was used in the manufacture of such product. For information on the use of this product for other purposes, contact Marketing Department, GenScript USA Inc., GenScript 860 Centennial Ave Piscataway, NJ 08854. Phone: 1-732-885-9188. Fax: 1-732-210-0262. Email: marketing@genscript.com.